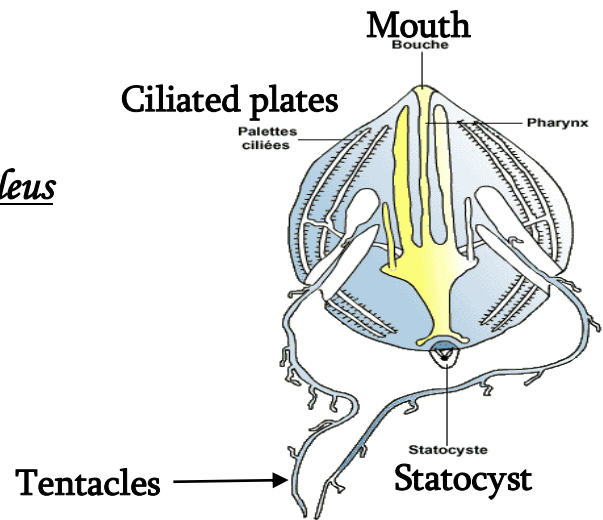


## Model Answer Of Zoology

1/Title : *THE CYDIPPE: Pleurobrachia pileus*



2/

- **Diploblastic:** Two germ layers (ectoderm + endoderm), separated by mesoglea. Examples: Cnidarians, Sponges, Ctenophores.
- **Triploblastic:** Three germ layers (ectoderm + mesoderm + endoderm). Examples: Platyhelminthes, Nematodes, Annelids.

3/The term "Protostome" refers to: (1pts) a) **Mouth forms first**

4/Provide the classification of the species *Spongia officinalis*: (3 pts)

Kingdom: **Animalia** Subkingdom: **Metazoa** Phylum: **Porifera** Class: **Demospongia** Order: **Keratozoa** Genus: **Spongia**

5/ Nematodes are considered pseudocoelomates because their body cavity (the pseudocoel) is not fully lined with mesodermal tissue, unlike a true coelom. Instead, the cavity is derived from the embryonic blastocoel and only partially lined by mesoderm, making it a "false coelom." This structural difference is key to their classification.

6/ They are acoelomates, meaning they **lack a true body cavity**.

7/ Conjugation is a **sexual process** where two *Paramecia* **align at their oral grooves**, exchange micronuclei, and **increase genetic variability**.

8 / African sleeping sickness is caused by **Trypanosoma** (protozoan parasite) and transmitted through the bite of infected **tsetse flies**.